

EMSYS.

Holistic & Agile Management Software

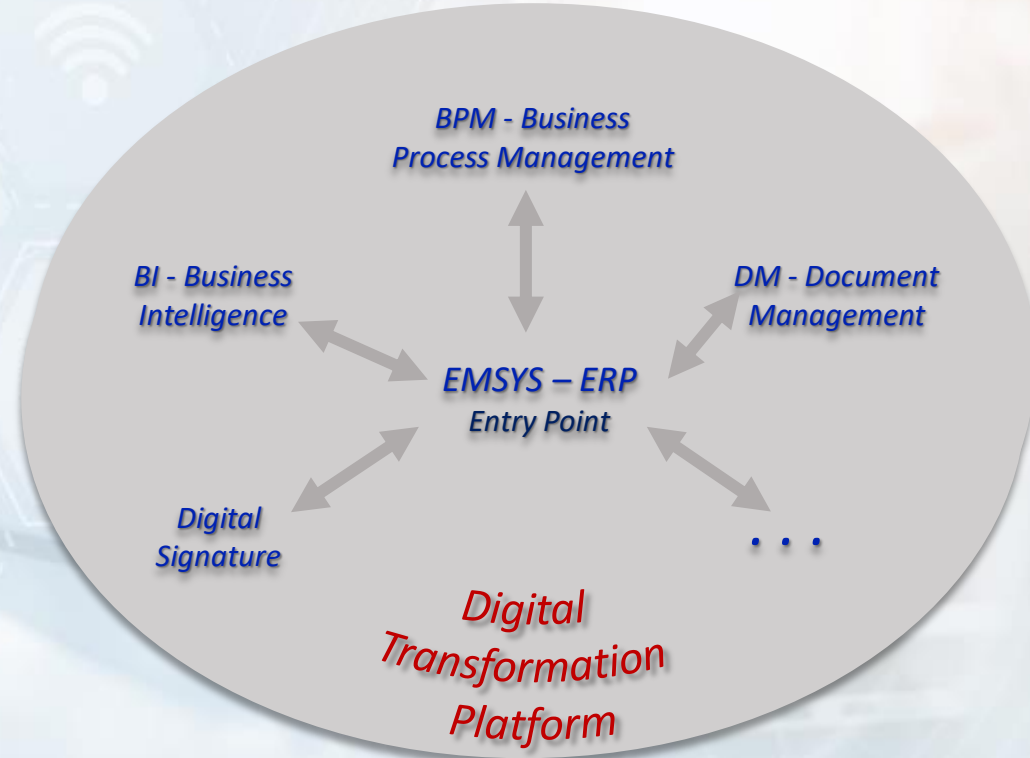


Today's Choice for Tomorrow's Business

Holistic & Agile Management

PRODiNF

Software Company
since 1990



Industry Solutions

The same version of EMSYS used across several industries

❑ Utilities

❑ Higher Education

❑ Insurance

❑ Energy

❑ Constructions

❑ Research

❑ Discrete Production

❑ Process Production

❑ Dairy Industry

❑ Meat Industry

❑ Wholesale Distributions

❑ Retail

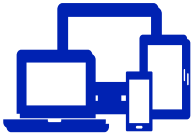
❑ Public Sector

❑ Hospitality

❑ Oil & Gas

❑ Transport

❑ Services




Digital Transformation Platform

- ❑ Holistic & Agile Management: *Holdings, Multinationals, Departmental... (public and private)*
- ❑ Installation *On premise* or in the *Cloud*. Fast track to digitization. Intuitive use
- ❑ *Natively integrated components. EMSYS-ERP is the platform only entry point.* It rapidly integrates users
- ❑ *BPM* – Business Process Management ; *DM* - Document Management; *BI* - Business Intelligence
- ❑ Operational *emails* based on *smart* templates; *OCR*-izing documents
- ❑ Smart document-based (PDF, Word): elaboration and sharing. *Digital electronic signature*
- ❑ Authentication with external systems: *Keycloak, LDAP, Active Directory, Facebook, Google, Github* etc
- ❑ Operation processes are available in any browser, on any device (*responsive*)
- ❑ Replacement, *automation and optimization* of obsolete *processes*. Low dependence on staff mobility
- ❑ Dynamic control of processes, cost reduction and management performance



New Vision

EMSYS – Enterprise Management SYStem

- ❑ Gartner: 
- ❑ *No-Code*: User configurable and remodelable management system
- ❑ *Zero Downtime*: Maintenance, Remodeling management system
- ❑ *Independently working management and operational system*
- ❑ *Performance tracking of any management and analysis structure*
- ❑ *Management by: Budgets, Business Units, Profit Centers, Results*
- ❑ *Financial Flow-based Management on: delayed, current and future cash-flows*
- ❑ Management by *indicators, objectives, exceptions*
- ❑ *Rapid implementation* based on process models: general and industry
- ❑ *Modeling and configurations persistence in future versions*
- ❑ Industry – Specific Processes: *Insurance, Utilities, Construction, Transport, Hospitality, R&D ...*

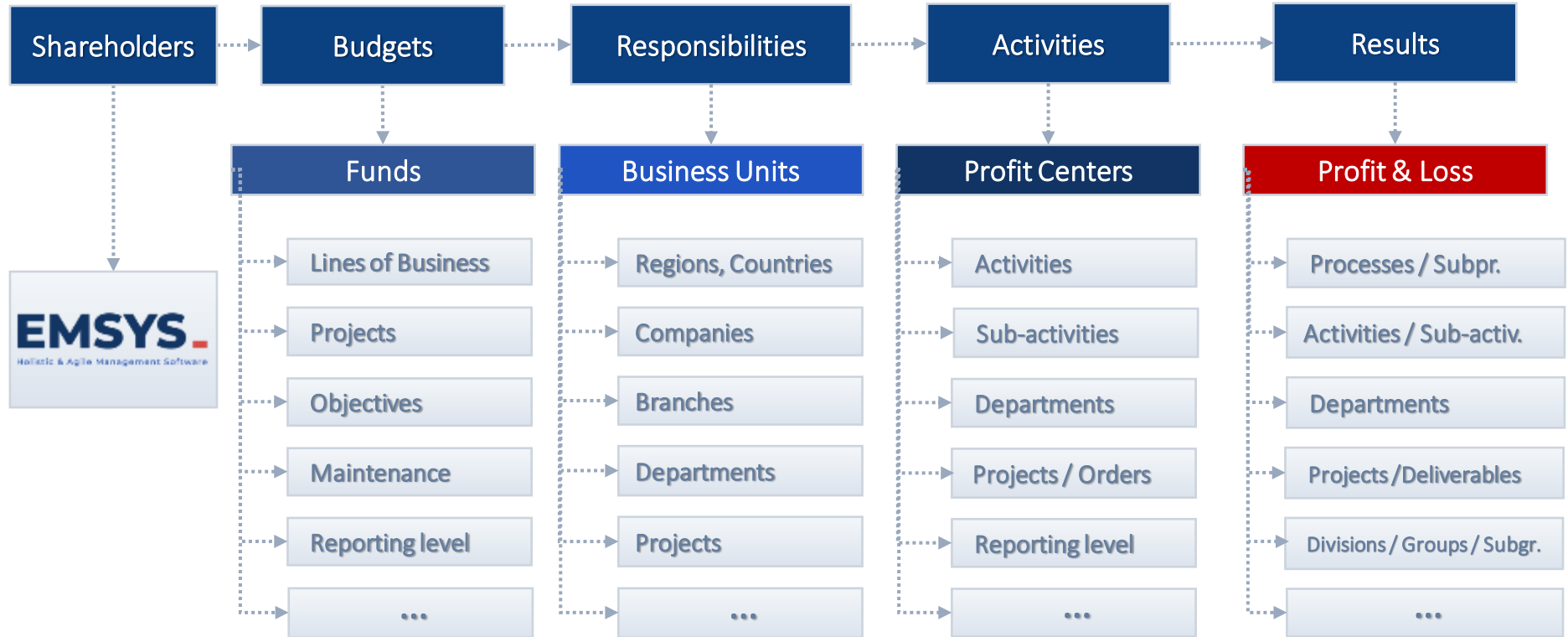


New
Vision

EMSYS – Enterprise Management SYStem

- ❑ Increased: Competitiveness, Productivity, Profitability
- ❑ Consolidated view of Customers, Products and Services
- ❑ Agile reaction to: operational challenges, client requirements and market changes
- ❑ *Management and operational systems “freed” from code, ID structures, multiple information*
- ❑ *Segmentation of definitions* on the user’s responsibility level - *user profiles*
- ❑ *Real-time system*: the processing ends with the validation of any transaction
- ❑ *Workspace customization*; Intuitive access to functions - fast learning curve
- ❑ Supplier-independent installation and automatic version updates
- ❑ *Operational and support transactions automatically result in financial and management accounting*
- ❑ *Reports based on standard, as well as user-defined dimensions*
- ❑ Lower TCO-Total Cost of Ownership, higher ROI-Return on Investment

Holistic Management



Agile Management

On-the-fly-reconfigurable management system

Models and configurations persist in new versions

Only one information is associated by time-period within the management system

EMSYS BPM – Integrated Workflow / Case Management and Decision Automation Platform

Standard and additional (user-generated) dimensions selectable for reporting



Funds - Budget System (Example)

Construction

Projects

Project ...

Project ...

...

Industrial Production

Ballast

Concrete

Billets

...

Mechanization

Asset Management

Predictive Maintenance

Corrective Maintenance

Maintenance

Marketing

Administration

Investment

Social activities

Environment protection

Utilities

Business line

Business line

Department

Sub-department

Projects

Projects Group

Project

Theme

Phase

Asset Management

Predictive Maintenance

Corrective Maintenance

Maintenance

Marketing

Administration

General Management

Economic Department

...

...

Insurance

Operational

General Insurance

Life insurance

Health insurance

Commercial

Investitional

Deposits

Treasury certificates

Listed Shares

Government Bonds

Asset Management

Predictive Maintenance

Corrective Maintenance

Maintenance

Marketing

Administration

General Management

Economic Department

...

Business Units - Management Team (Example)

Construction

Organization

Branch

Branch

Production

Headquarters

Utilities

Regional Operator

Branch

Municipality

Neighboring

localities

Branch

...

Headquarters

Insurance

Organization

Region

Branch

Agency

Headquarters

Department

Sub-dep.

Profit Centers (Example)

Construction

Projects

Project

Branch

Site

Industrial Production

Ballast

Concrete Factory

Billets

....

Mechanization

Machinery

Transport

Administration

Department

Financial

Other expenses

Sponsorships

Penalties

Utilities

Branch

Town

Water

Sewage

Commune

Village

Water

Sewage

Administration

General Management

Department ...

....

Economic Department

Department ...

....

Investment

....

Other expenses

Insurance

Insurance

Regions

Branches

Agency

Commercial

Space rentals

Other activities

Administration

General Management

Department ...

...

Economic Department

Department ...

...

Investment

Other expenses

Penalties

Results (Example)

Construction

Project Groups

- Commercial
- Public
- Industrial Product

Portofolios

- Proj. Mng. 1
- Proj. Mng. 2
- Proj. Mng. 3

Types of Projects

- Construction
- Roads
- Improvement
- Commercial Spaces

Projects

- Project
- Project
- Project
- Subproject
- Subproject

Physical Stages

- Design
- Site organization
- Excavation

...

Themes

- ...
- ...

Phases

- ...
- ...

Utilities

Services

- Potable water
- Industrial water
- Sewage
- Connections
- Septage
- etc

Departments

- Water Section
- Sewage section
- Quality Laboratory
- etc.

Sectors

- Surface water
- Deep water
- Purification
- Pumping

Activity

- Water
- Sewage
- Laboratory

Administration

Phase

- Capture
- Treatment
- Drilling
- Purification
- Pumping
- Channel networks

Customer Groups

- Companies
- Cities
- Community

Insurance

Activity

- Insurance
- Commercial

Subactivity

- Life
- Non Life
- Health
- Commercial

ASF class

- A1 Accident
- A2 Health
- A3 Vehicles
- etc

Corporate Class

- 01 Casualties
- 02 Casco
- 03 Goods
- etc

Standard product

- Casco Auto
- Casco Accidents

Objects

- Accidents
- Vehicle
- House
- etc

Risks

- Damage
- Thefts
- Fire
- etc

Risk Type

- Base
- Additional

Accounting is a Result of Operational Processes

Statutory Accounting

- ❑ Financial Accounting
- ❑ Cost Accounting
- ❑ External Accounting
- ❑ Analytical Accounting
- ❑ IAS / IFRS Accounting
- ❑ Alternative Accounting
- ❑ Group Accounting

{ Accounting Registers }

{ Transactions }

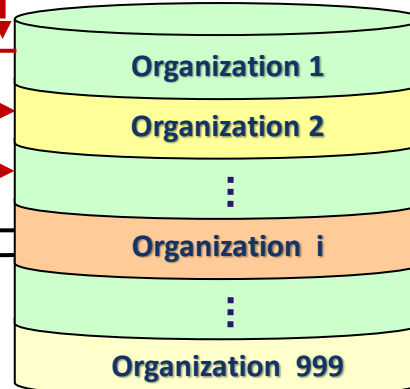
Automatic
100% Processes = Accounting

Currencies:

- ❑ Transactional
- ❑ Statutory
- ❑ Reference
- ❑ Consolidation

Division

Consolidation



Managerial Accounting

- ❑ Business Units
- ❑ Funds
- ❑ Profit Centers
- ❑ Cost Items
- ❑ Business Lines
- ❑ Activities
- ❑ Projects
- ❑ Orders
-

Processes:

- ❑ Insurance
- ❑ Utilities
- ❑ Logistics
- ❑ Payroll
- ❑ Fixed Assets
- ❑ Receipts & Payments
- ❑ Transport
- ❑ Higher Education
- ❑ Imports
- ❑ ...

Organization:

- ❑ Holding
- ❑ Multinational
- ❑ Company
- ❑ Branch

EMSYS | Smart Business Solutions - I

Financial

- General Ledger
- Cost Accounting
- IAS / IFRS Accounting
- Alternative Accounting
- Fixed Assets
- Cash Management
- Budgeting and Controlling
- Account Receivable
- Account Payable
- Investment

Logistics

- Sales & Distrib.
- Discrete Production
- Process Production
- Purchasing
- Inventory
- Retail
- Public Acquisition
- Sales Force Automation
- Online Store
- Contract Management

HR & Payroll

- Personnel Admin.
- Time Management
- Payroll
- Travel Management
- Recruitment and Selection
- Career & Training
- Performane Evaluation

Project Manag.

- WBS, Gantt Chart
- Network Diagram
- Critical Path
- Resources
- Budget
- Planning
- Execution
- Monitoring & Control
- Closing

Asset Management

- Asset inventory
- Preventive & Predictive Maintenance
- Work Planning & Scheduling
- Resources Management
- Asset Performance
- Life Cycle Cost
- Failure Analysis

Utilities

- Clients & Contracts
- Services and Tariffs
- Meters
- Consumption
- Invoicing
- Collections
- Debt Recovery & Contractual Discipline
- Call Center

EMSYS | Smart Business Solutions - II

Insurance

- Non-life, Life, Health
- Product Configuration
- Questionnaires
- Offerings, Quotation
- Policy Management
- Underwriting
- Collections
- Reserves, Claims
- Commissions
- Reinsurance

Resort Management

- Bookings
- Point of Sales
- Kitchen Management
- Mobility
- Collections
- Claims
- Competencies

University

- Academic Structures
- Curriculum
- Students' Life Cycle
- Fees
- Scholarships
- Cafeteria
- Hostel
- Graduation Process
- Students' Portal

TMS

- Parcel, LTL, FTL, LCL, FCL, ADR, Bulk
- 1PL, 2PL, 3PL, 4PL
- Road, Railway, Intermodal
- Fleet management
- Order management
- Transportation planning
- Route maps
- Tracking processes
- Portal

BI & CPM

- Financial Analytics
- HR Analytics
- Sales Analytics
- Procurements Analytics
- Insurance Analytics
- Utility Analytics
- Performance Management

Others

- BPM - Integrated
- DM - Integrated
- Reporting System – Integrated
- E-mail - Integration
- CRM - Integration
- Electronic Register
- E-mail Management
- Visitor Management

PRODINF

Software Company

www.prodinf.ro



Today's Choice for Tomorrow's Business